

Specialist Chemicals

At every Keyline branch we stock a wide range of specialist chemicals, including:

- Sealants and adhesives
- Concrete repair
- Grouts and anchors
- Concrete curing
- Waterproofing

We'll also advise you on the safe handling and use of all the chemicals we stock. COSHH data sheets are available on request from your local branch.



INSTARMAC



Sika Admixes



Product	Sika Opti-Mix Mortar Plasticiser	Sika Opti-Mix Frostproofers and Accelerator	Sika Opti-Mix Integral Waterproofers	Sika Opti-Mix Rendermix	Sika Opti-Mix Water Repellent	Sika Opti-Mix Liquid Cement Colours
Keyline Code	329932	329933	329934	329935	329936	329937 - Black 329938 - Brown 329939 - Red 329940 - Yellow
Manufacturer	Sika	Sika	Sika	Sika	Sika	Sika
Colour	Brown	Straw	Pink	Brown	White	Various
Description	Concentrated Mortar Plasticiser	Concentrated Frostproofers and Accelerator	Concentrated Integral Waterproofers	Concentrated Water Resisting Plasticiser	Concentrated Water Repellent for Masonry.	Powerful liquid dyes for a more consistent colour in sand cement mortars
Application	Improves workability, minimises cracking and crazing. Comes in 1ltr dispensing bottles, replaces conventional 25ltr containers.	Winter working admixture. Equivalent to 5ltr of standard frostproofers.	General purpose, economic waterproofing admixture for mortars and concrete. Comes in 1ltr dispensing bottles, replaces conventional 25ltr containers.	For improving renders and screeds. Replaces conventional 25ltr containers.	Just dilute and spray to prevent water penetrating brickwork.	Equivalent to 5kg of traditional powdered toners.
Pack Size	1ltr	1ltr	1ltr	1ltr	1ltr	1ltr

Sika Sealants and Adhesives



Product	Sikaflex PRO 2HP	Sikaflex Construction	Sikaflex PRO 3WF	Sikaflex EBT
Keyline Code	994383 – Black, 600ml 994384 – Black, 310ml 994385 – Dark Grey, 600ml 994386 – Light Grey, 310ml 994398 – White, 600ml 994410 – White, 310ml	229514 – Grey, 310 ml 229515 – White, 310 ml 229516 – Grey, 600ml	994412 – Concrete Grey, 600ml	685068 – Beige, 310ml 685069 – Black, 310ml 685070 – Brown, 310ml 685071 – Grey, 310ml 685072 – White, 310ml
Manufacturer	Sika	Sika	Sika	Sika
Colour	White, Grey, Dark Grey and Black	Grey and White	Concrete Grey and Grey	Beige, Black, Brown, Grey and White
Description	Expansion Joint Sealant	Expansion Joint Sealant	Expansion Joint Sealant for Floors	Elastic Bonding Adhesive, Sealant & Filler
Application	High performance one part, gun grade, polyurethane – permanently elastic and extremely adhesive.	General purpose one part polyurethane, gun grade – permanently elastic.	High performance and abrasion resistant, one part, gun grade, polyurethane – permanently elastic and extremely durable.	Typical use weather resistant, high grab & multi-purpose.

Fosroc Sealants and Adhesives



Product	Nitoseal MS100	Nitoseal MS300	Nitoseal MS50	Colpor 200PF	Thioflex 600 Gun Grade
Keyline Code	SR320702	982495	SR320702	911468	982495
Manufacturer	Fosroc	Fosroc	Fosroc	Fosroc	Fosroc
Type	MS polymer	MS polymer	MS polymer	Cold applied	Polysulphide
Application	Seal joints in concrete brick pre-cast panels, stone cladding, aluminium etc.	Seal floor joints in trafficked areas marble, stone.	Seal joints in general building applications.	Seal joints in concrete roads/runways/hardstanding.	Seal movement joint in building & civil eng. structure.
Application Examples	Precasting projects, warehousing.	Factory floors, stadia, windows, doors etc.	Brickwork, concrete, and cargo areas.	Garage forecourt, parking reservoirs, basements.	High rise, retaining walls, subways, basements.
Grade	Gun	Gun	Gun	Pour	Gun
Joint Min/Max	5-35mm	6-30mm	5-35mm	30mm max	5 - 50mm
Pack Size	380ml	600ml	380ml	2 x 5ltr packs	2.5ltr pack
Pack Composition	One Part	One Part	One Part	Base/Curing	Base/Curing
Colours	6 Colours	Grey	9 Colours	Black	Grey
Tools	Skeleton Gun	Skeleton Gun	Mixing Paddle	G Gun	G Gun/Follower/Paddle
Primer	None	Fosroc Primer mS2	None	No20 - conc/timber	No7 - brick/stone/conc
Primer Usage	None	0.75ltr/90m joint	None	1ltr/20ltr Colpor	1ltr/30ltr Thioflex



Sika Concrete Repair



Product	Sika MonoTop 615	Sika Rapid Repair Mortar
Keyline Code	520686	520683
Manufacturer	Sika	Sika
Colour	Grey	Grey
Description	Concrete Repair and Reprofiling Mortar	Fast Setting Repair Mortar with High Early Strength Gain
Application	For interior and exterior use, easy to mix – just add water. Suitable for overhead & vertical repairs. May be trowel or spray applied.	Excellent adhesion, fast and easy to apply & only requires mixing with water.
Pack Size	25kg	25kg

Sika Bedding Mortars



Product	SikaSet 45	Sika FastFix-M60
Keyline Code	539426	714181
Manufacturer	Sika	Sika
Colour	Grey	Grey
Description	Rapid Hardening Repair and Bedding Mortar	Manhole Bedding Mortar
Application	High early strength gain: traffickable in 1 hour. Shrinkage compensated and can be used at low temperatures.	Rapid setting for the fast installation of street ironwork. Only requires mixing with water. Rapid strength gain: traffickable in 1 hour. Fast and easy to apply.
Pack Size	25kg	25kg

Fosroc Concrete Repair



Product	Nitomortar PE	Patchroc GP	Renderoc GP	Renderoc HB
Keyline Code	912141	911761	911463	911518
Manufacturer	Fosroc	Fosroc	Fosroc	Fosroc
Type	Polyester Resin	Cementitious	Cementitious	Cementitious
Application	High strength jointing - fast setting.	Patching mortar - fast setting.	General purpose concrete reinstatement mortar.	High build reinstatement mortar.
Application Examples	Bedding and fixing kerbstones, brick slips, manhole sets, infill holes in concrete floors.	Emergency reinstatement of patches in concrete - airport aprons, access ramps, warehouse floors.	Use as render as well as all types of patch repairs.	Vertical and overhead repairs.
Pack Size	14kg	25kg	25kg	18kg
Usage Approx	7.5ltr/14kg	1m ² @ 12mm	1.6m ² @ 10mm	1.6m ² @ 10mm
Primer	No primer required	Nitobond AR/Nitobend EP	Nitobond HAR	Nitobond HAR

Sika Grouts and Anchors



Product	Sika Grout 212	Sika AnchorFix-1	Intraplast
Keyline Code	520684	508805	539428
Manufacturer	Sika	Sika	Sika
Colour	Grey	Grey	Grey
Description	Flowable Cementitious Grout	Chemical Anchoring Adhesive	For Use in Sand/Cement Grouts
Application	For filling, levelling and grouting of machine bases, bearing plates and steel fixings.	For fixing bolts, ties and fittings into concrete, bricks and blocks. Fast curing even at low temperatures and is applied using a standard sealant gun.	Expanding admixture to compensate for shrinkage. Plasticising to improve strength and durability. Improved fluidity and handling.
Pack Size	25kg	300ml	10kg

Fosroc Grouts and Anchors



Product	Conbextra GP	Conbextra HF	Conbextra EPR	Cebex 100	Lokfix S25
Keyline Code	915379	915406	915558	915901	533198
Manufacturer	Fosroc	Fosroc	Fosroc	Fosroc	Fosroc
Type	Cementitious	Cementitious	Epoxy Resin	Powder	Polyester resin pourable grade
Application	General purpose non-shrink grout for gap thickness 10-75mm.	Free flowing, non-shrink grout for gap thicknesses 10-100mm.	Free-flow grout-thickness 10-120mm.	Shrinkage compensating admixture.	Two part grout for use where hole is 8-40mm greater in diameter than bar.
Application Examples	Flowable: bolt pockets, void filling and stanchion base plates. Trowellable: for bedding loadbearing components.	Large stanchion base plates, pre-cast panel joints and pumped grouting.	Grout for heavy dynamic or mobile loads.	Bed grouting, duct grouting, non shrink infilling and jointing.	Anchoring of bolts and bars 12-50mm in diameter into concrete, rock, masonry and brickwork.
Pack Size	25kg	25kg	8 & 16ltr packs	24 x 0.225kg	2.5ltr packs
Usage Approx	Trowelled 12ltr, Fluid 13.25/25kg	13.25ltr/25kg	1.6m ² @ 10mm 0.8m ² @ 10mm	225g/50kg OPC	Dependent upon bolt size and hole diameter



Sika Concrete Curing



Product	Sikafloor CureHard 24
Keyline Code	539423
Manufacturer	Sika
Colour	Clear
Description	Transparent surface hardener, dustproofer, sealing and curing compound for concrete
Application	One part, clear liquid to cure, harden and seal finish for hardened concrete.
Pack Size	25ltr
Usage Approx	10m ² /ltr

Fosroc Concrete Curing

Product	Concure WB
Keyline Code	218177
Manufacturer	Fosroc
Application	Spray applied membrane retains moisture for effective curing.
Application Examples	Large area concrete surfaces - airport runways, roads, bridgeworks.
Pack Size	20ltr
Usage Approx	3.5-5m ² /ltr

Waterproofing

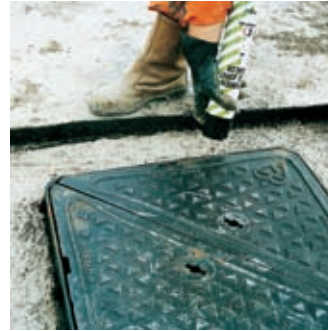
Sika 1 mortars are pre-batched kiln dried blends of specially graded aggregates and cements packaged in 4 grades at the appropriate mix ratios for optimum application performance and durability. When mixed with the diluted Sika 1 Waterproofer liquid they provide the multi-coat components for the structural waterproofing and waterproof render systems.



Product	Sika 1 Spritz and Bonding Coat Mortar	Sika 1 Render Mortar	Sika 1 Finishing Mortar	Screeding Mortar
Keyline Code	504360	504361	504362	–
Manufacturer	Sika	Sika	Sika	Sika
Packaging Colour	Red Stripe	Brown Stripe	Green Stripe	Blue Stripe
Description	Pre-batched Mortar	Pre-batched Mortar	Pre-batched Mortar	Pre-batched Mortar
Pack Size	25kg	25kg	25kg	25kg

Ultracrete Bedding and Reinstatement Products

Keyline offer Instarmac proven solutions for use in many areas of the construction industry, with the leading brand Ultracrete offering a range of products for highway maintenance, streetscape projects, speciality concrete repair materials, industrial flooring systems and structural renovation materials





Product	Ultracrete M60	Ultracrete PY4	Ultracrete QC10	Ultracrete IRR	Ultracrete SCJ
Manufacturer	Instarmac	Instarmac	Instarmac	Instarmac	Instarmac
Type	Cementitious Mortar	Polyester Resin Setting Bedding Mortar	Rapid Setting 10mm concrete, designed for backfilling reinstatements & post installation	6 & 10mm cold-lay macadam	Aerosol bitumen spray
Application	Rapid Strength Bedding Mortar. 10 – 75mm. Can be used on most ironwork installations. Used as part of the BBA/HAPAS approved system.	A high performance resin mortar for the bedding of ironwork. Conforms to HA104/02. Ideal for ductile, and highly trafficked applications. Used as part of the BBA/HAPAS approved system.	Applied to the surround of a manhole reinstatement, gives lateral strength and stability, and provides a perfect base for surfacing layers. Used as part of the BBA/HAPAS approved system. Can also be used as a high performance post installation concrete when speed of set and strength is required.	BBA/HAPAS approved permanent cold-lay macadam in footpaths, cycle tracks & class 2,3 & 4 carriageways. Can also be used as a high performance temporary patching product.	Applied to the vertical edges of reinstatements to prevent the ingress of water, part of the BBA/HAPAS system.
Pack Size	25kg Bag/Tub.	25kg Tub/Container.	25kg Bag/Tub.	25kg Bag/Tub.	750ml Can.
Yield	12.5ltr approx.	12.5ltr approx.	12ltr	15ltr	-
Usage Quantities	1m ² @ 12.5mm	1m ² @ 12.5mm	1m ² @ 12mm	1m ² @ 15mm	-