



Hi-Spec Pressure Treated Panel – page 107

# Fencing

The right fences and walls can provide structure and privacy to a garden.

Fencing	104 - 114
Gravel Boards & Wire Netting	114
Unilog	115
Posts & Post Caps	116
Post Supports & Accessories	117
Timber Gates	118
Metal Railings & Gates	119 - 121
Zinc Plated Range	122
Metal Posts	123

Whether you're looking for timber fencing, willow screens or metal railings - the choice of materials and styles for enclosing or redefining your garden is huge. Choose taller fences for privacy or railings for neat divisions that let in the light. To finish, add gates for practicality or a trellis to help create an attractive garden feature.



Pitsford Gate - page 104



Quinton - page 113



Fence Post Caps - page 116



## Fencing

### Pitsford

Pitsford Fencing Panel	Product Code	Pack Size
1800 x 1800mm (W x H)	414850	1
1800 x 1200mm (W x H)	414851	1
<b>Curved Gate</b>		
900 x 1800mm (W x H)	414857	1



### Wootton

Wootton Fencing Panel	Product Code	Pack Size
1800 x 1800mm (W x H)	935768	1
1800 x 1200mm (W x H)	935769	1
<b>Gate</b>		
900 x 1800mm (W x H)	332507	1



Look out for FSC certified products

### Finedon

With its fan-like trellis the Finedon range makes a stunning addition to a garden.

Finedon Fencing Panel	Product Code	Pack Size
1800 x 1800mm (W x H)	987050	1

### Duston

Duston Convex Fencing Panel	Product Code	Pack Size
1800 x 1800mm (W x H)	987047	1
1800 x 1100mm (W x H)	532520	1
<b>Curved Gate</b>		
1000 x 1800mm (W x H)	552238	1
<b>Square Fencing Panel</b>		
1800 x 1800mm (W x H)	987038	1



**PT** **DT** For more information on Timber Treatment, see page 189.

Photographs are for illustrative purposes only. All photographs are as a guide only and do not necessarily represent the products available. Colours may differ from those shown and stock may vary from branch to branch and is subject to availability. Please ask at your branch for stocking details. Timber is a natural product and products are susceptible to movement according to ambient weather conditions. Fence panel slats may twist but, unless damage results, should return to their original shape. All sizes are approximate allowing for tolerances in the timber components. Product specifications may change without prior notice.

*Helping  
Hand*

Cuprinol Trade  
Exterior Wood  
Preserver

See page 168

## Bradville

Bradville Fencing Panel	Product Code	Pack Size
1800 x 1800mm (W x H)	987029	1
Curved Gate		
1000 x 1775mm (W x H)	552239	1



**PT DT** For more information on Timber Treatment, see page 189.

## Closeboard and Wave Top Closeboard

Closeboard Fence Panel	Product Code	Pack Size
1828 x 1828mm (W x H)	848946	20
1828 x 1525mm (W x H)	848948	20
1828 x 1220mm (W x H)	848949	20
1828 x 915mm (W x H)	848950	20
Gate		
915 x 1828mm (W x H)	332510	1

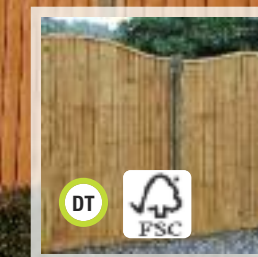
Wave Top Closeboard Fence Panel	Product Code	Pack Size
1828 x 1828mm (W x H)	352180	20



*Don't  
forget*

Cuprinol Sprayable  
Fence Treatment

See page 169



## Hi-Spec Pressure Treated Panel

- 100 x 8mm horizontal boards
- Pressure treated
- 2 x 32mm vertical battens on both sides

Hi-Spec Pressure Treated Panel	Product Code	Pack Size
1828 x 1828mm (W x H)	935780	10



Photographs are for illustrative purposes only. All photographs are as a guide only and do not necessarily represent the products available. Colours may differ from those shown and stock may vary from branch to branch and is subject to availability. Please ask at your branch for stocking details. Timber is a natural product and products are susceptible to movement according to ambient weather conditions. Fence panel slats may twist but, unless damage results, should return to their original shape. All sizes are approximate allowing for tolerances in the timber components. Product specifications may change without prior notice.



### Featheredge Panel

- 2ex 22 x 125mm featheredge boards
- 2 x 30 x 50mm horizontal battens on reverse
- Fully framed

Featheredge Panel	Product Code	Pack Size
1830 x 1830mm (W x H)	414848	20



### Contractors Panel

- 2ex 22 x 125mm featheredge boards
- 3 x 25 x 75mm horizontal battens on reverse

Contractors Panel	Product Code	Pack Size
1828 x 1828mm	160644	20
1830 x 1520mm	160646	20
Domed Top Panel		
1828 x 1828mm	160645	20
1830 x 1520mm	160647	20

### Trade Lap Panel

Trade Lap Panel	Product Code	Pack Size
1828 x 1828mm (W x H)	817520	20
1828 x 1524mm (W x H)	817521	20
1828 x 1220mm (W x H)	817522	20
1828 x 915mm (W x H)	817523	20
1828 x 610mm (W x H)	848937	20



### Super Lap Pressure Treated Panel

Features additional battening to a traditional Lap Panel, providing extra support for more durable panel.

Super Lap Pressure Treated Panel	Product Code	Pack Size
1828 x 1828mm (W x H)	160637	20
1828 x 1524mm (W x H)	160641	20
1828 x 1220mm (W x H)	160642	20
1828 x 915mm (W x H)	160643	20



**PT** **DT** For more information on Timber Treatment, see page 189.

Photographs are for illustrative purposes only. All photographs are as a guide only and do not necessarily represent the products available. Colours may differ from those shown and stock may vary from branch to branch and is subject to availability. Please ask at your branch for stocking details. Timber is a natural product and products are susceptible to movement according to ambient weather conditions. Fence panel slats may twist but, unless damage results, should return to their original shape. All sizes are approximate allowing for tolerances in the timber components. Product specifications may change without prior notice.



## Boughton

Boughton Fencing Panel	Product Code	Pack Size
1800 x 1800mm (W x H)	841966	1



**NEW**

## Brixworth

- Close knit lattice ideal for climbing plants and boundary screening

Brixworth Panel	Product Code	Pack Size
1800 x 1800mm	160648	1
1800 x 1500mm	160649	1
1800 x 1200mm	160650	1
1800 x 900mm	160651	1
1800 x 600mm	160652	1
1800 x 450mm	160653	1
1800 x 300mm	160654	1



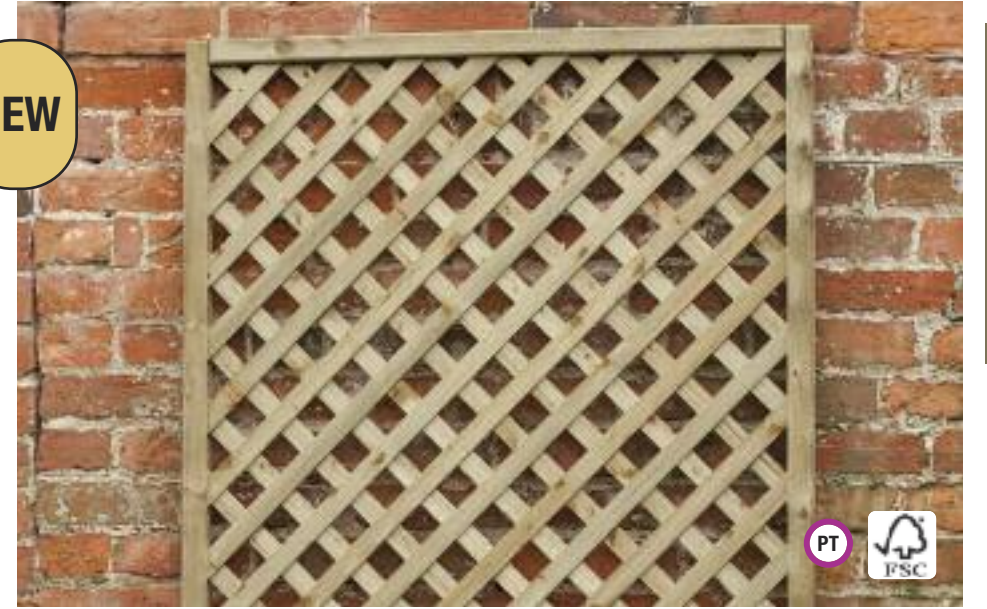
## Holcot

- Fine sawn diamond lattice
- Fully framed

Holcot Panel	Product Code	Pack Size
1800 x 1800mm	160655	1
1800 x 900mm	160656	1
1800 x 600mm	160657	1
1800 x 300mm	160658	1



**NEW**



## Trellis Panel

Trellis Panel	Product Code	Pack Size
1828 x 1828mm (W x H)	361151	20
1828 x 1220mm (W x H)	361149	20
1828 x 915mm (W x H)	361154	20
1828 x 610mm (W x H)	361153	20
1828 x 305mm (W x H)	361152	20



Look out for FSC certified products

**PT** **DT** For more information on Timber Treatment, see page 189.

Photographs are for illustrative purposes only. All photographs are as a guide only and do not necessarily represent the products available. Colours may differ from those shown and stock may vary from branch to branch and is subject to availability. Please ask at your branch for stocking details. Timber is a natural product and products are susceptible to movement according to ambient weather conditions. Fence panel slats may twist but, unless damage results, should return to their original shape. All sizes are approximate allowing for tolerances in the timber components. Product specifications may change without prior notice.



## Willow Hurdle

A striking alternative to the traditional fence panel, the Willow Hurdle is an excellent way to enhance the natural beauty of your garden.

Willow Hurdle	Product Code	Pack Size
1800 x 1800mm (W x H)	352193	1



## Framed Willow Screen

Treatment applied to frame only.

Framed Willow Screen	Product Code	Pack Size
1828 x 1828mm (W x H)	466363	1



## Quinton

Quality low-level boundary fence.

Quinton Fence	Product Code	Pack Size
1800 x 1000	162379	1

NEW



## Picket Round Top

Traditional picket fence.

Picket Round Top	Product Code	Pack Size
1830 x 900mm (W x H)	789795	10



For more information on Timber Treatment, see page 189.

Photographs are for illustrative purposes only. All photographs are as a guide only and do not necessarily represent the products available. Colours may differ from those shown and stock may vary from branch to branch and is subject to availability. Please ask at your branch for stocking details. Timber is a natural product and products are susceptible to movement according to ambient weather conditions. Fence panel slats may twist but, unless damage results, should return to their original shape. All sizes are approximate allowing for tolerances in the timber components. Product specifications may change without prior notice.



## Loose Fencing

Brown Treated Featheredge	FSC	PEFC	Product Code	Treatment Type
2 ex 22 x 100 x 1800mm	✓	✓	812689	PT
2 ex 22 x 125mm	✓	✓	897446	PT
2 ex 22 x 125 x 1800mm	✓	✓	916866	PT
2 ex 22 x 150mm	✓	✓	897463	PT
2 ex 22 x 150 x 1800mm	✓	✓	812699	PT
Green Treated Featheredge	FSC	PEFC	Product Code	Treatment Type
2 ex 22 x 100mm	✓	✓	107050	PT
2 ex 22 x 100 x 1800mm	✓	✓	812686	PT
2 ex 22 x 125mm	✓	✓	794628	PT
2 ex 22 x 125 x 1800mm	✓	✓	510627	PT
2 ex 22 x 150mm	✓	✓	107049	PT
2 ex 22 x 150 x 1800mm	✓	✓	812696	PT
2 ex 22 x 150 x 3600mm	✓	✓	945687	PT
2 ex 32 x 175mm	✓	✓	850382	PT

## Brown Treated Gravel Board

Brown Treated Gravel Board	FSC	PEFC	Product Code	Treatment Type
22 x 150mm	✓	✓	646285	PT
19 x 150 x 1800mm	✓	✓	594434	PT
22 x 150 x 1830mm	✓	✓	848954	PT
22 x 150 x 3000mm	✓	✓	812705	PT

## Green Treated Gravel Board PT

Green Treated Gravel Board	FSC	PEFC	Product Code
22 x 150mm	✓	✓	812704

## Concrete Gravel Board

Concrete Gravel Board	Product Code	Pack Size
Recessed 6" GBR150	700252	1
Concrete Gravel Board Smooth 6" GBS150		
6ft x 6"	855426	1
Concrete Gravel Board Recessed 12" GBR305		
6ft x 12"	805329	1
Concrete Gravel Board Smooth 12" GBS305		
6ft x 12"	855427	1
Concrete Gravel Board Rough Faced 12" GBROC305		
6ft x 12"	872004	1

## Galvanised Wire Netting

Galvanised Wire Netting	Weight	Product Code
600mm x 10m	13 x 22g	928106
900mm x 10m	13 x 22g	928109
1200mm x 10m	13 x 22g	928112
600mm x 10m	25 x 20g	928107
900mm x 10m	25 x 20g	928110
1200mm x 10m	25 x 20g	928113
600mm x 10m	50 x 19g	928108
900mm x 10m	50 x 19g	928111
1200mm x 10m	50 x 19g	928115



## Unilog



- Chamfered top round poles
- 15 year service life
- Approved by Greenguard Children and Schools Certification Program



	0.6m length	0.9m length	1m length	1.2m length	1.5m length	1.8m length	2.1m length	2.4m length	2.7m length	3m length	3.6m length
<b>85mm dia</b>	218893	218894	218895	218896	218897	218898	-	-	-	-	-
<b>100mm dia</b>	218899	218900	218901	218902	218903	218904	218905	218906	-	-	-
<b>125mm dia</b>	218907	218908	218909	218910	218911	218912	218913	218914	218915	218917	-
<b>150mm dia</b>	218918	218919	218920	218921	218922	218923	218924	218926	218943	218944	218945
<b>200mm dia</b>	218946	218947	218948	218949	218950	218951	218952	218953	218954	218962	218968

Photographs are for illustrative purposes only. All photographs are as a guide only and do not necessarily represent the products available. Colours may differ from those shown and stock may vary from branch to branch and is subject to availability. Please ask at your branch for stocking details. Timber is a natural product and products are susceptible to movement according to ambient weather conditions. Fence panel slats may twist but, unless damage results, should return to their original shape. All sizes are approximate allowing for tolerances in the timber components. Product specifications may change without prior notice.

PT DT For more information on Timber Treatment, see page 189.



### Fence Post Caps

Fence Post Caps	Product Code	Pack Size
100 x 100mm – Brown	811089	50
100 x 100mm – Green	511902	50
125 x 125mm – Brown	841023	50
125 x 125mm – Green	511903	50



### Acorn Top

Acorn Top	Product Code	Pack Size
85 x 85 x 131mm – Green	511907	2



### Ball Top

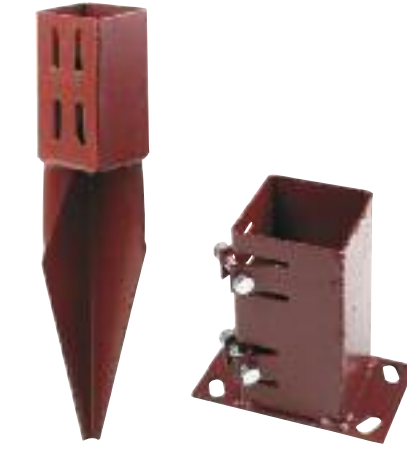
Fence Post Caps	Product Code	Pack Size
85 x 85 x 106mm – Green	511913	2

## Fence Post Supports and Accessories



### Twin Bolt

Twin Bolt	Product Code
75 x 75 x 750mm	504460



### Repair Spur/Bolt Down

Repair Spur	Product Code
75 x 75mm	909789
Bolt Down	Product Code
75 x 75mm	988037



### Post Support/Metclip

Post Support - Concrete In	Product Code
75 x 75mm	527514
Metclip – available in other sizes	Product Code
46mm	988020



### Concrete Posts Restricted availability in Scotland

Concrete Posts Slotted Intermediate	Product Code	Pack Size
9ft	700723	1
8ft	700243	1
7ft	700242	1
6ft	700722	1
5ft	700244	1



### Reeded Fence Posts

Reeded Fence Post 2.4m	Product Code	Pack Size
100 x 100mm	510570	1
100 x 100mm – Slotted	510571	1

### Treated Fence Posts

Treated Brown	1.5m	1.8m	2.1m	2.4m	2.7m	3m	FSC	Treatment Type
75 x 75mm	799243	799244	799245	799246	799247	533293	✓	PT
100 x 100mm		841019	841020	841021	841022	972217	✓	PT

Treated Green	1.5m	1.8m	2.1m	2.4m	2.7m	3m	FSC	Treatment Type
75 x 75mm	848751	811679	811678	811671	848752	989236	✓	PT
100 x 100mm	-	851503	851504	851505	857638	989235	✓	PT



### Wedge Grip

Wedge Grip	Product Code
75 x 75 x 600mm	504451



### Post Fix

Post Fix	Product Code
20kg Plastic Bag	595243




### Driving Tool/Support Post

Driving Tool	Product Code
75 x 75mm	988033
Post Support	Product Code
50 x 50 x 450mm	526194

## HIRE IT

### Post Hole Borer

See page 179



Photographs are for illustrative purposes only. All photographs are as a guide only and do not necessarily represent the products available. Please ask at your branch for stocking details. Product specifications may change without prior notice.

# Timber Gates

Timber gates are an excellent way to make the home more secure. As well as offering a wide range of styles we also have all the tools you'll need to install them.



Oxford T&G Heavy Duty Gate	Product Code	Pack Size
900 x 1800mm (W x H)	352209	1



Timber Gate - Heavy Duty	Product Code	Pack Size
915 x 1815mm (W x H)	811111	1



Bradville Curved Gate	Product Code	Pack Size
1000 x 1775mm (W x H)	552239	1

# Metal Railings and Gates

**MADE TO MEASURE METAL RAILINGS AND GATES AVAILABLE**

The majority of ranges are available made to measure by special order. Full fixing kit supplied with every gate, fence and rail, except with the Village system.



Saxon Arched Railing	Fits Opening	Height	Product Code
	1830mm	662mm	343483



Saxon Fence Panel	Fits Opening	Height	Product Code
	1830mm	954mm	620008



Saxon Tall Single	Fits Opening	Height	Product Code
	914mm	1980mm	819099



Duston Curved Gate	Product Code	Pack Size
1000 x 1800mm (W x H)	552238	1



Pitsford Gate	Product Code	Pack Size
900 x 1800mm (W x H)	414857	1



Wootton Gate	Product Code	Pack Size
900 x 1800mm (W x H)	332507	1



Closeboard Gate	Product Code	Pack Size
914 x 1815mm (W x H)	332510	1



Manor Railing	Fits Opening	Height	Product Code
	1830mm	457mm	620006



Manor Fence Panel	Fits Opening	Height	Product Code
	1830mm	914mm	620005



Manor Single	Fits Opening	Height	Product Code
	914mm	914mm	620007

**Don't Forget**

Village Railing Post  
See page 123

Photographs are for illustrative purposes only. All photographs are as a guide only and do not necessarily represent the products available. Please ask at your branch for stocking details. Product specifications may change without prior notice.



Abbey	Fits Opening	Height	Product Code
Fence Panel	1830mm	815mm	819037



Classic	Fits Opening	Height	Product Code
Single	914mm	914mm	990958

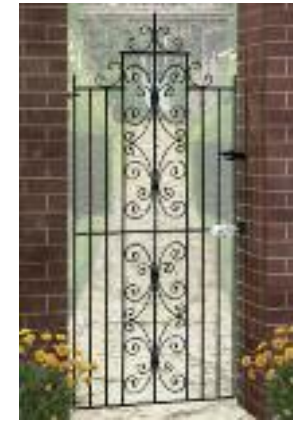


Corfe	Fits Opening	Height	Product Code
Tall Split Bow	2743mm	2083mm	819060

**MADE TO MEASURE AVAILABLE**



Corfe	Fits Opening	Height	Product Code
Double Gate	2438mm	1168mm	511480
Tall Double Gate	2438mm	1778mm	511487



English Rose	Fits Opening	Height	Product Code
Tall Gate	900-980mm	1960mm	179203



Village*	Fits Opening	Height	Product Code
Fence Panel	1830mm	914mm	819119



Abbey	Fits Opening	Height	Product Code
Low Bow	914mm	1340mm	819031



Classic	Fits Opening	Height	Product Code
Bow Top	914mm	1830mm	990961



Corfe	Fits Opening	Height	Product Code
Tall Single	914mm	1778mm	511484



Balmoral	Fits Opening	Height	Product Code
Double Gate	2438mm	1168mm	511504
Tall Double Gate	2438mm	2082mm	511511



English Rose	Fits Opening	Height	Product Code
Railing	1830mm	670mm	179208



Village*	Fits Opening	Height	Product Code
Railing	1830mm	508mm	819122

Photographs are for illustrative purposes only and do not necessarily represent the products available. Please ask at your local branch for stocking details. Product specifications may change without prior notice. \*Village does not include fixings.

# Zinc Plated Range

Zinc plated (electro-galvanised) gates and rails offer increased resistance against corrosion.

- Black powder coated for extra protection
- Gate fittings have universal left or right hand opening latch
- Fence and rail brackets are slotted for ease of fixing
- Made to measure option available
- Fixtures and fittings supplied separately



Warwick Tall Single	Fits Opening	Height	Product Code
Warwick Tall Single	850-920mm	1932mm	410866



Verona Tall Single	Fits Opening	Height	Product Code
Verona Tall Single	850-920mm	1798mm	410867



Henley Bow Top	Fits Opening	Height	Product Code
Henley Bow Top	850-920mm	1799mm	410886

# Metal Posts



Ball Post	Size	Product Code
Universal Gate / Fence Concrete-In	50mm	546062
Universal Fence Bolt-Down	50mm	546063
Railing - In-line Bolt-Down	50mm	790246
Railing - Corner Bolt-Down	50mm	790248

Suitable for Manor/Saxon/Priory and Court



Square Post	Size	Product Code
Universal Gate / Fence Concrete-In	50mm	546065
Universal Fence Bolt-Down	50mm	546069
Railing - In-Line Bolt-Down	50mm	620023
Railing - Corner Bolt-Down	50mm	620024
Gate - Hinge	70mm	819111
Gate - Hinge	70mm	819116
Gate - Latch	70mm	819118

Suitable for Manor/Saxon/Priory and Court



Village Fence Gate Post	Size	Product Code
Bolt-Down	50mm	819132
Concrete-In	50mm	819129



Village Railing Post	Size	Product Code
Bolt-Down	50mm	819133



Weston Single	Fits Opening	Height	Product Code
Weston Single	850-920mm	1041mm	410892



Warwick Double	Fits Opening	Height	Product Code
Warwick Double	2420-2500mm	1076mm	410946



Verona Panel	Fits Opening	Height	Product Code
Verona Panel	1830mm	812mm	410954



Corfe	Size	Product Code
Split Bow Hinge	100mm	511499
Tall Single Hinge	70mm	511495
Tall Double Hinge	70mm	511497
Double Hinge	70mm	511493

Balmoral	Size	Product Code
Double Hinge	100mm	511517
Tall Double Hinge	150mm	511522

## Reasons to use Keyline

- ✓ Nationwide network of branches
- ✓ We stock products from the leading brands at competitive prices
- ✓ Fast and efficient service from our friendly, knowledgeable staff
- ✓ Our core range is never out of stock and specialist products are sourced quickly
- ✓ A delivery service you can depend on
- ✓ Comprehensive tool and equipment hire service available at selected branches

Photographs are for illustrative purposes only. All photographs are as a guide only and do not necessarily represent the products available. Please ask at your branch for stocking details. Product specifications may change without prior notice.